



*jordan fishwick*

Apt 5 Eton Row, 26 - 30 Altrincham Road,  
PCM £1,100 PCM





## Eton Row WILMSLOW SK9 5ND

£1,100 PCM



### PART FURNISHED AVAILABLE NOW

Set in a central location for Wilmslow town centre is this attractive two bedroom apartment.

Always a popular choice this duplex apartment is within walking distance of the train station and is only a short drive to the motorway networks and Manchester International Airport.

Presented in excellent condition and with a light and airy feel this property is ideal for the single professional or couple

Entrance hall, open plan lounge kitchen diner with gas hob and electric oven, fridge freezer and washing machine, bedroom two and bathroom with shower over bath, to the lower ground floor master bedroom with en suite shower room. Gated parking

Contact Wilmslow 01625 536300 £1100.00pcm



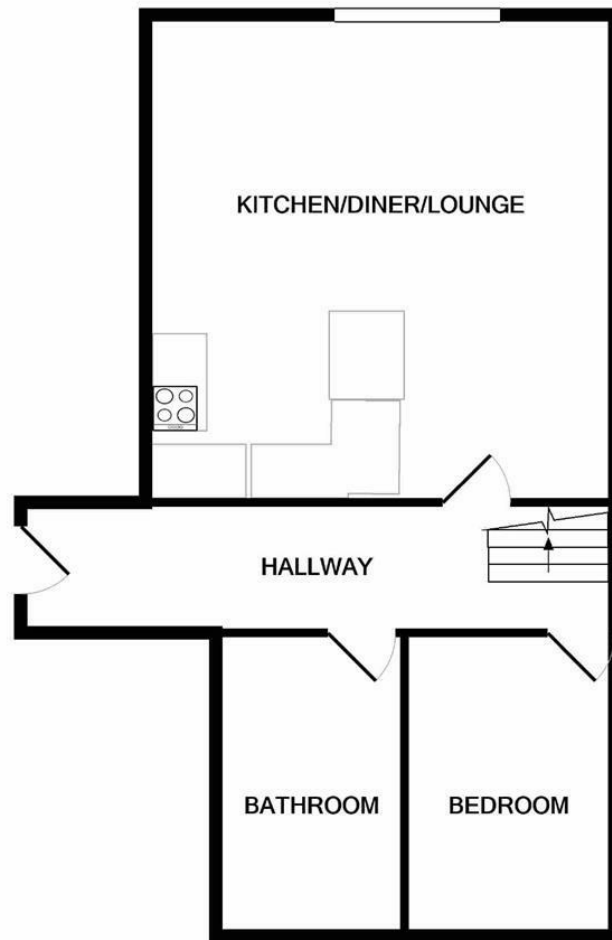


- TWO BEDROOM APARTMENT
- TWO BATHROOM
- CENTRAL LOCATION
- WALKING DISTANCE OF WILMSLOW TRAIN STATION
- GATED DEVELOPMENT
- PART FURNISHED
- CHESHIRE EAST B

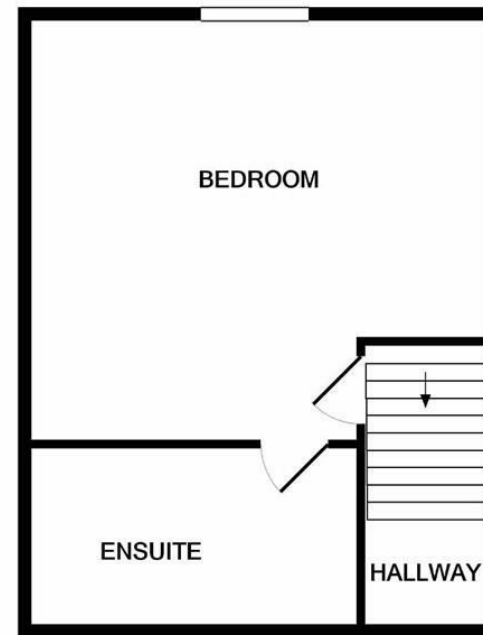


Energy Efficiency Rating		
	Current	Potential
Very energy efficient - lower running costs		
(92 plus) A		
(81-91) B		79
(69-80) C		
(55-68) D	65	
(39-54) E		
(21-38) F		
(1-20) G		
Not energy efficient - higher running costs		
England & Wales		EU Directive 2002/91/EC





GROUND FLOOR



BASEMENT LEVEL

Measurements are approximate. Not to scale. Illustrative purposes only  
Made with Metropix ©2021



These particulars are believed to be accurate but they are not guaranteed and do not form a contract. Neither Jordan Fishwick nor the vendor or lessor accept any responsibility in respect of these particulars, which are not intended to be statements or representations of fact and any intending purchaser or lessee must satisfy himself by inspection or otherwise as to the correctness of each of the statements contained in these particulars. Any floorplans on this brochure are for illustrative purposes only and are not necessarily to scale.

Offices at: Chorlton, Didsbury, Disley, Hale, Glossop, Macclesfield, Manchester Deansgate, Manchester Whitworth Street, New Mills, Sale, Wilmslow and Withington

01625 536300

wilmslow@jordanfishwick.co.uk  
www.jordanfishwick.co.uk